



**REGIONAL SPECIALISED METEOROLOGICAL CENTRE-TROPICAL CYCLONES, NEW DELHI
TROPICAL WEATHER OUTLOOK**

DEMS-RSMC TROPICAL CYCLONES NEW DELHI DATED 22.12.2024

TROPICAL WEATHER OUTLOOK FOR THE NORTH INDIAN OCEAN (THE BAY OF BENGAL AND THE ARABIAN SEA) VALID FOR THE NEXT 168 HOURS ISSUED AT 0600 UTC OF 22.12.2024 BASED ON 0300 UTC OF 22.12.2024.

BAY OF BENGAL:

Yesterday's well marked low pressure area over westcentral Bay of Bengal persisted over the same region at 0300 UTC of today, the 22nd December 2024. The associated cyclonic circulation extended upto 3.1 km above mean sea level. It is likely to move west-southwestwards and reach southwest Bay of Bengal near north Tamil Nadu & south Andhra Pradesh coasts around 24th December.

The latest satellite imagery indicates low level cyclonic circulation centered near 14.5°N and 86.2°E. Intense convection is sheared towards the east, though low and medium clouds covered the northern sector extending upto north Andhra Pradesh, Odisha and Myanmar Coasts.

Scattered low and medium clouds with embedded intense to very intense convection lay over central Bay of Bengal (minimum CTT minus 70-80 degree Celsius). Scattered low and medium clouds with embedded moderate to intense convection lay over south Bay of Bengal & south Andaman Sea and weak to moderate convection lay over north Bay of Bengal and north Andaman Sea.

***PROBABILITY OF CYCLOGENESIS (FORMATION OF DEPRESSION) DURING NEXT 168 HRS:**

24 HOURS	24-48 HOURS	48-72 HOURS	72-96 HOURS	96-120 HOURS	120-144 HOURS	144-168 HOURS
NIL	NIL	NIL	NIL	NIL	NIL	NIL

***NOTE: EVERY 24HR FORECAST IS VALID UPTO 0300 UTC (0830 IST) OF NEXT DAY**

ARABIAN SEA:

Scattered low and medium clouds with embedded weak to moderate convection lay over southeast Arabian sea, Lakshadweep islands area, Maldives & Comorin area. Scattered low and medium clouds over rest Arabian sea.

***PROBABILITY OF CYCLOGENESIS (FORMATION OF DEPRESSION) DURING NEXT 168 HRS:**

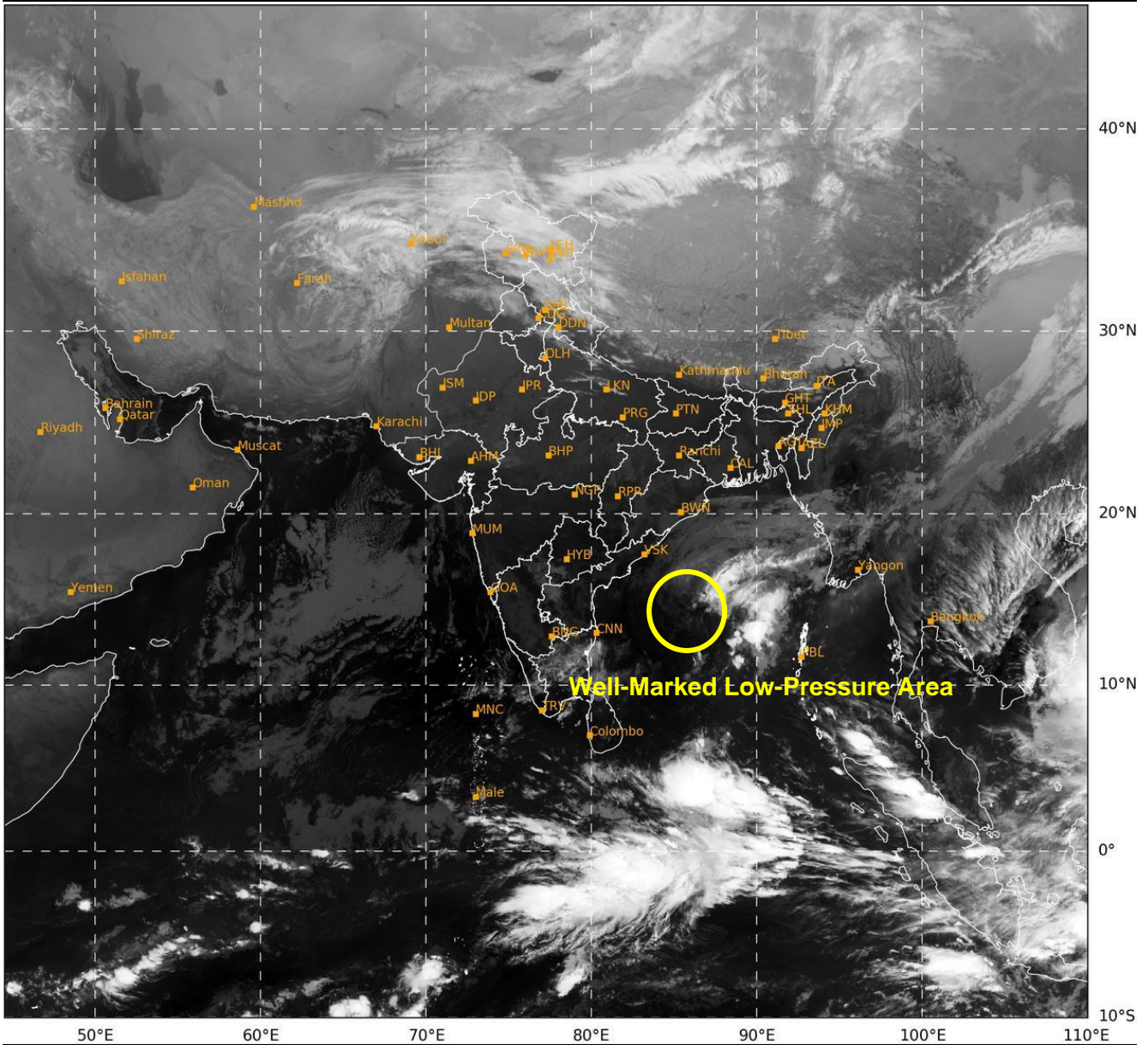
24 HOURS	24-48 HOURS	48-72 HOURS	72-96 HOURS	96-120 HOURS	120-144 HOURS	144-168 HOURS
NIL	NIL	NIL	NIL	NIL	NIL	NIL

***NOTE: EVERY 24HR FORECAST IS VALID UPTO 0300 UTC (0830 IST) OF NEXT DAY**

REMARKS: NIL

SAT : INSAT-3DR IMG
IMG_TIR1 10.8 um
LIC Mercator

22-12-2024/(0315 to 0342) GMT
22-12-2024/(0845 to 0912) IST



469

932

IMD, DELHI

Cloud distribution: (a) Isolated: <25%, Scattered:25-50%, Broken: 51-75%, Solid:>75%, Convection Intensity: (a) Weak: Cloud Top Temperature (CTT) >-25°C, (b) Moderate: CTT: - 25°C to -40°C, (c) Intense: CTT: - 41°C to -70°C and (d) Very Intense: : Less than -70°C
PROBABILITY OF CYCLOGENESIS (FORMATION OF DEPRESSION):NIL: 0%, LOW: 1-33%, , MODERATE: 34-66% AND HIGH: 67-100%
This is a guidance Bulletin for WMO/ESCAP Panel Member countries. Visit respective National websites for Country specific Bulletins